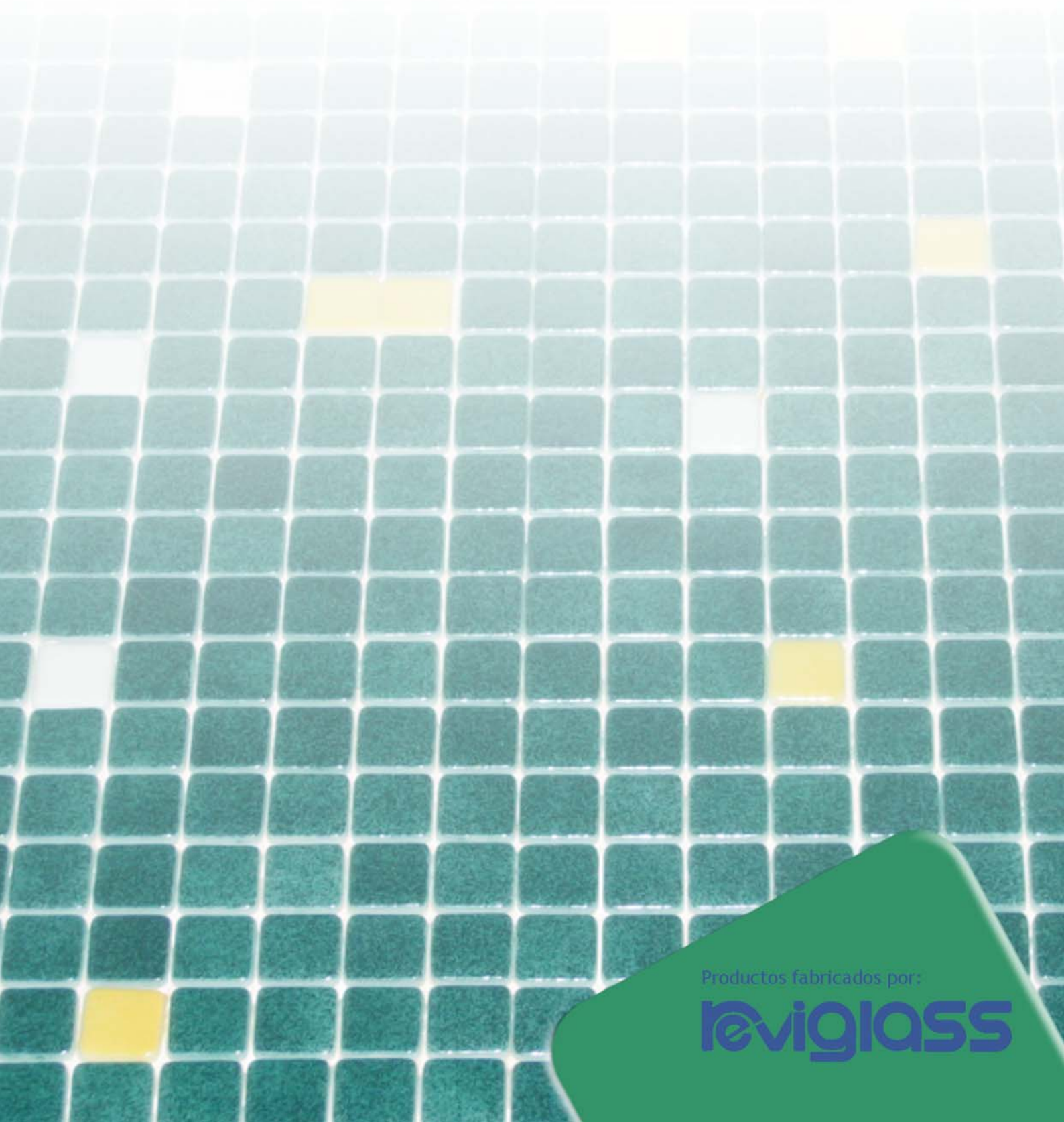




Piscinas y Decoraciones



Lucena S.L.



Productos fabricados por:

**reviglass**

# CARACTERÍSTICAS TÉCNICAS

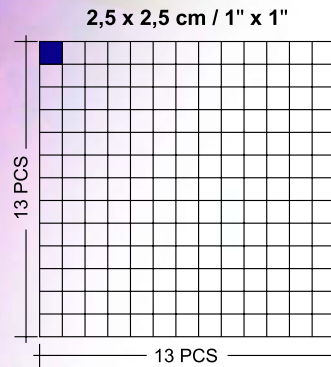
## CARACTÉRISTIQUES TECHNIQUES

### TECHNICAL DATA · TECHNISCHE DATEN

#### CONDICIONAMIENTO

CONDITIONNEMENT · PACKING · VERPACKUNG

MEDIDA MESURE SIZE FORMAT	PESO/M <sup>2</sup> POIDS/M <sup>2</sup> WEIGHT/M <sup>2</sup> GEWICHT/M <sup>2</sup>	PANELES/M <sup>2</sup> PANNEAUX/M <sup>2</sup> SHEETS/M <sup>2</sup> TAFELN/M <sup>2</sup>	MEDIDA PANEL MESURE PANNEAU SIZE OF SHEETS TAFELABMESSUNG	Q/CAJA Q/CARTON Q/BOX Q/KARTON	Q/PALET Q/PALETTE Q/PALLET Q/PALETTE
2,5 x 2,5 cm 1" x 1"	9,5 kg 9,5 kg	9 9	33,3 x 33,3 cm 1 x 1 ft	2 m <sup>2</sup> 21,52 sqft	108 m <sup>2</sup> 1162,08 sqft



**TAMAÑO PANEL**  
MESURE PANNEAUX  
SIZE SHEETS  
AUSMAB DER TAFELN

#### EUROPEAN TEST DATA

PROCEDURE	RESULTS	PROCEDURE	RESULTS
<b>UNE EN ISO 10.545-12</b>		<b>UNE EN ISO 10545-5</b>	
Resistencia al hielo Frost resistance Résistance au gel Resistenza al gelo Frostbeständigkeit	Resistente Resistant Résistant Resistente Widerstandsfähig	Resistencia al impacto Resistance to shock Résistance à l'impact Resistenza all'urto Beständigkeit gegen Aufschlag	Resistente Resistant Résistant Resistente Widerstandsfähig
<b>UNE EN ISO 10.545-13</b>		<b>UNE EN ISO 10545-7</b>	
Resistencia a los agentes químicos Resistance to chemical attack Résistance aux produits chimiques Resistenza agli agenti chimici Beständigkeit gegen Chemikalien	Resistente Resistant Résistant Resistente Widerstandsfähig	Resistencia a la abrasión Abrasion wear Résistance à l'abrasion Resistenza all'abrasione Verschleissfestigkeit	Resistente Resistant Résistant Resistente Widerstandsfähig
<b>UNE EN ISO 10.545-3</b>		<b>UNE EN ISO 10.545-9</b>	
Absorción de agua Water absorption Absorption d'eau Assorbimento acqua Wasseraufnahme	Null None Nul Null Null	Resistencia a los cambios de temperatura Resistance to thermal shock Résistance aux chocs thermiques Resistenza agli sbalzi di temperatura Temperaturwechselbeständigkeit	Resistente Resistant Résistant Resistente Widerstandsfähig
<b>UNE EN ISO 10.545-14</b>		<b>UNE EN ISO 67.101</b>	
Resistencia a las manchas Determination to Staining Résistance aux taches Resistenza alle macchie Beständigkeit gegen Flecke	Resistente Resistant Résistant Resistente Widerstandsfähig	Dureza mohs Mohs' Hardness Dureté de la surface MOHS Durezza scala MOHS Oberflächenhärte	5 5 5 5 5

#### UNITED STATES TESTS ATC (TILE COUNCIL OF NORTH AMERICA)

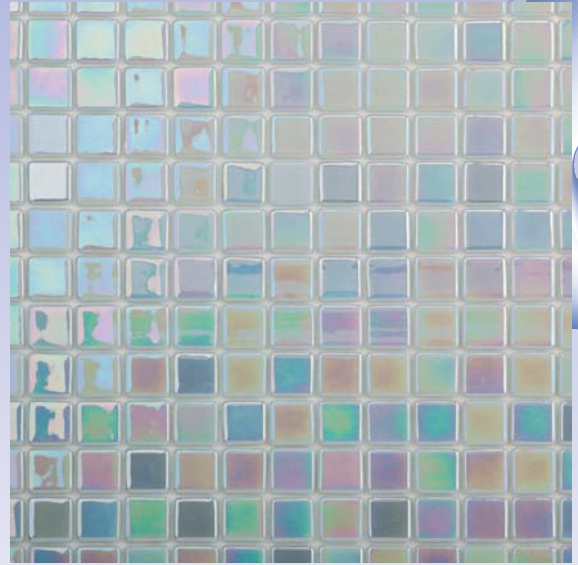
PROCEDURE	RESULTS	PROCEDURE	RESULTS
<b>ASTM C1378</b>		<b>MOHS' SCRATCH HARDNESS</b>	
Determination to Staining	Passes	Hardness	5
<b>ASTM C650</b>		<b>ASTM C373</b>	
Resistance to Chemical Substances	Resistant	Water Absortion Bulk Density Porosity	Null



# abalon



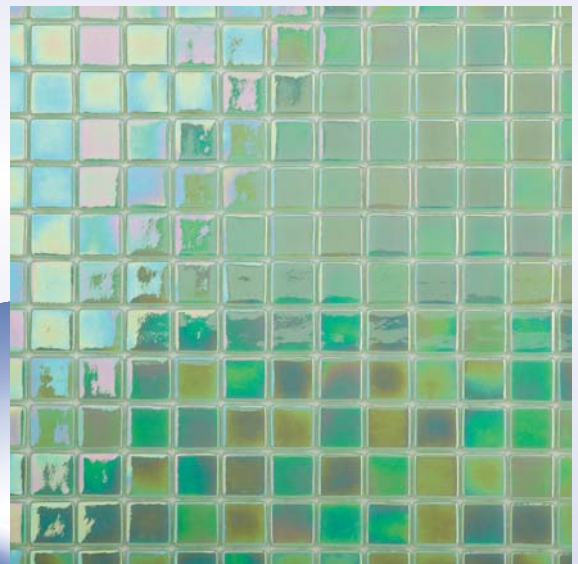
AB-01



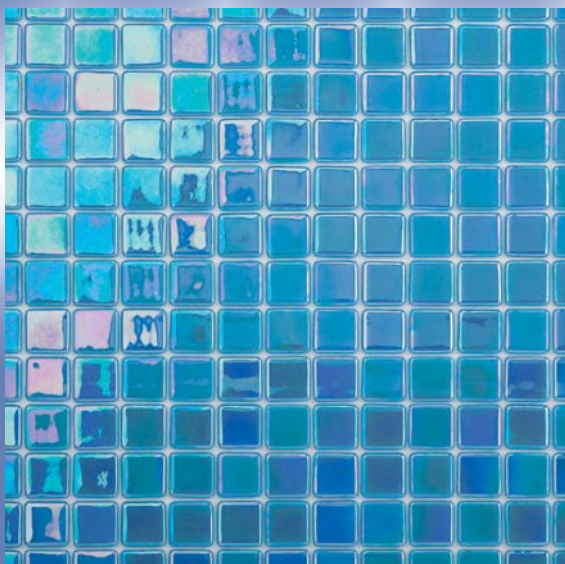
AB-02



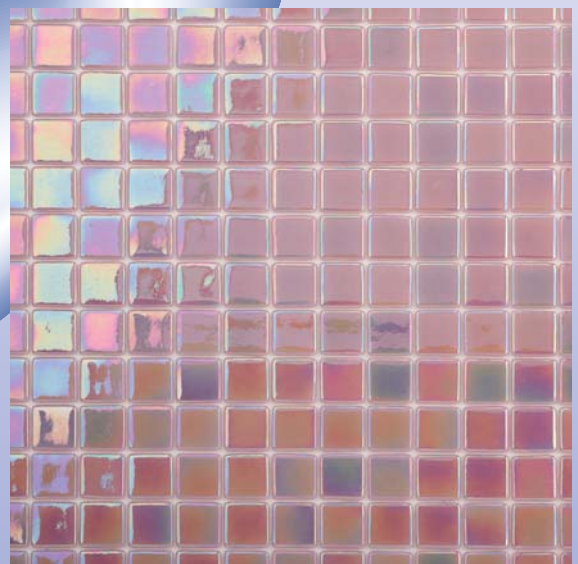
AB-03



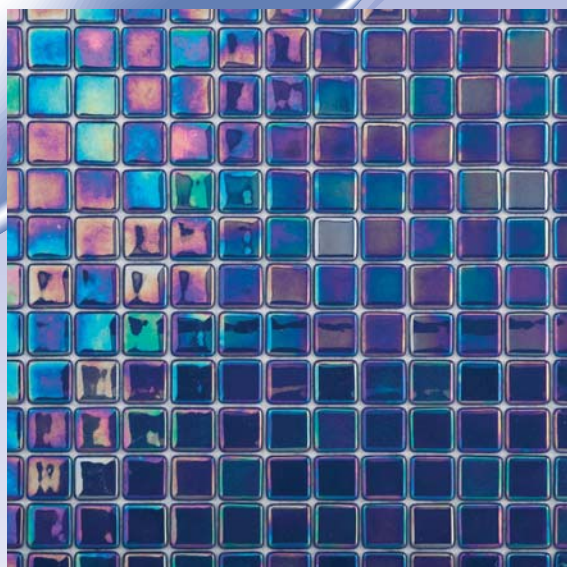
AB-04



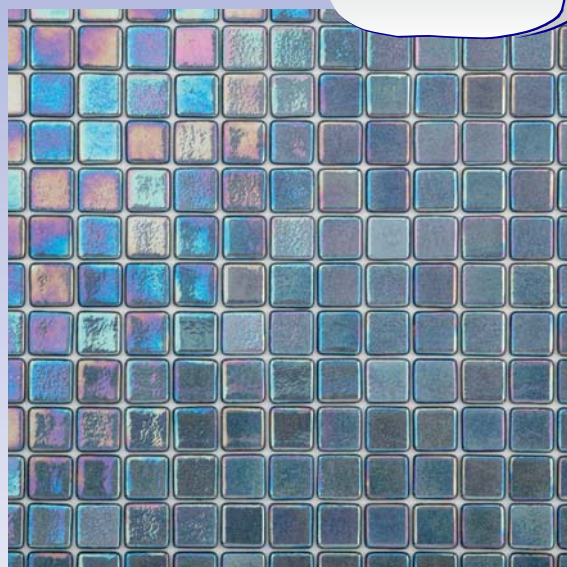
AB-05



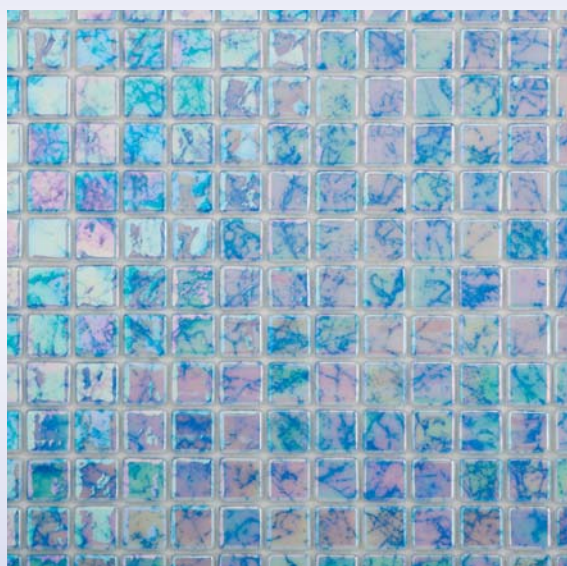
AB-06



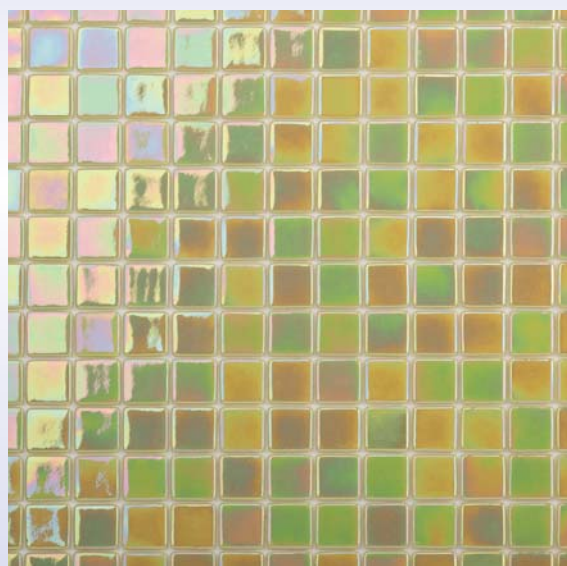
AB-07



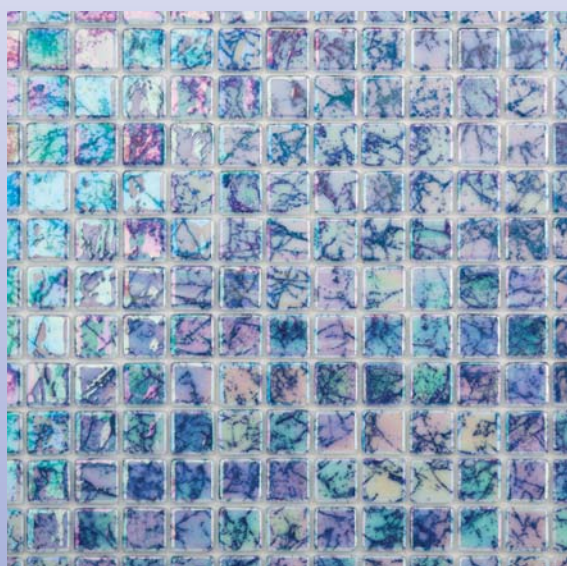
AB-08



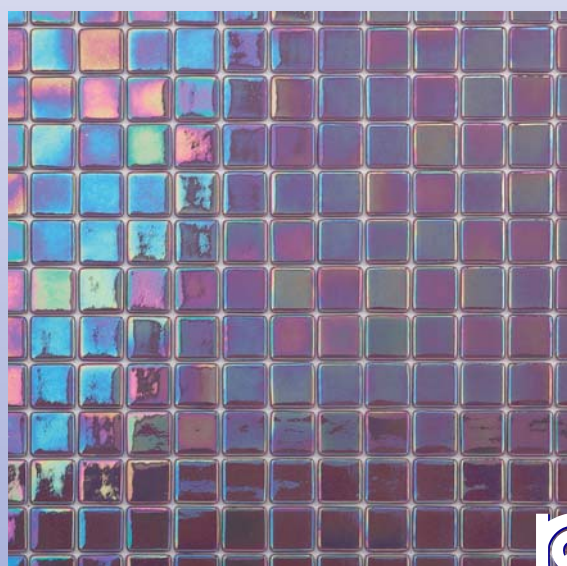
AB-09



AB-10



AB-11

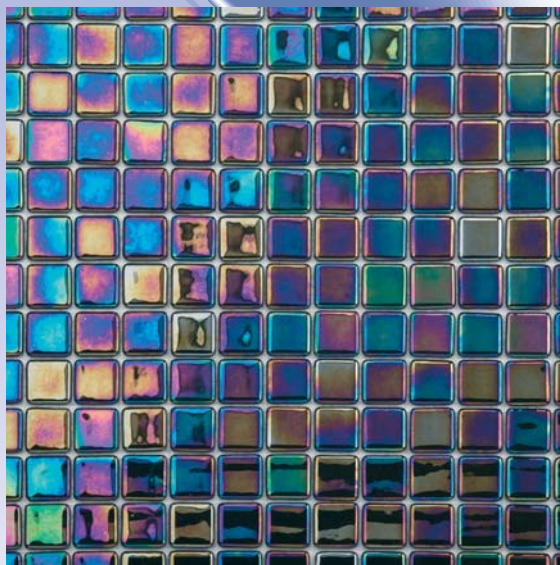


AB-12

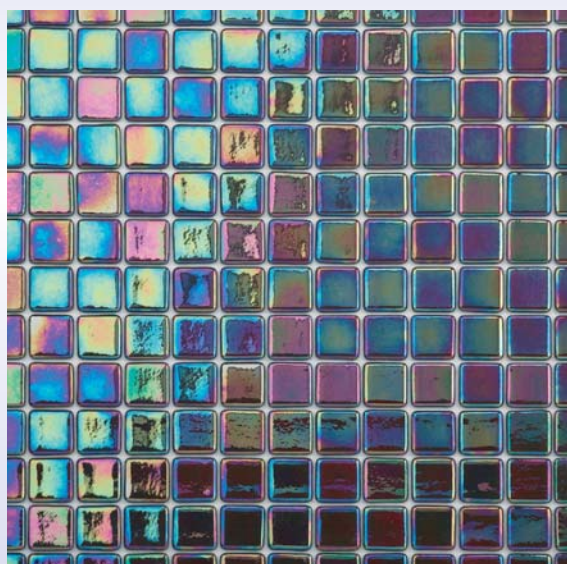
oalon



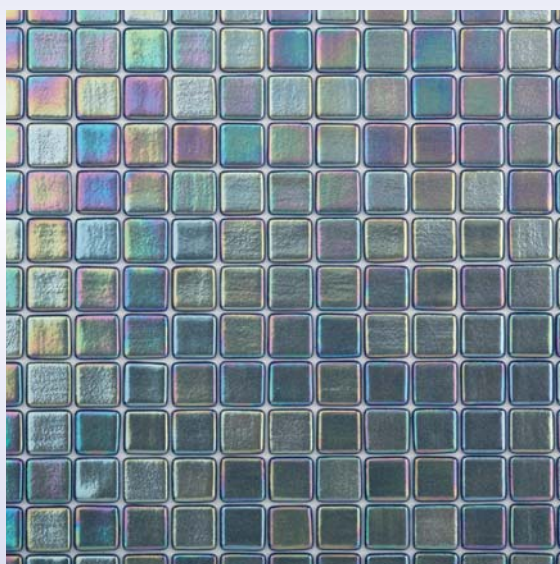
AB-13



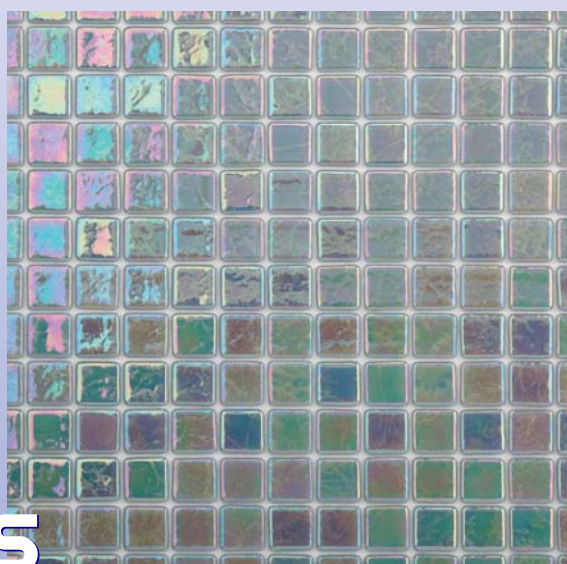
AB-14



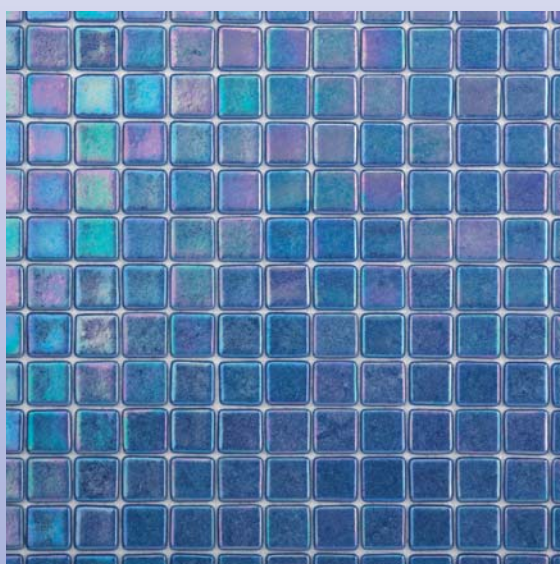
AB-15



AB-30



AB-31

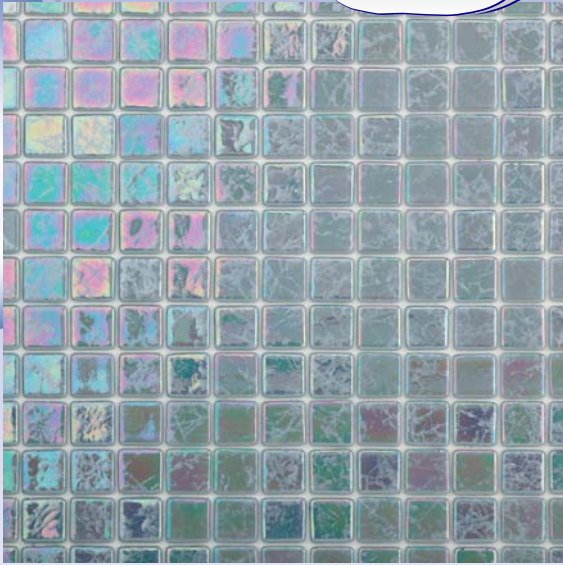


AB-32

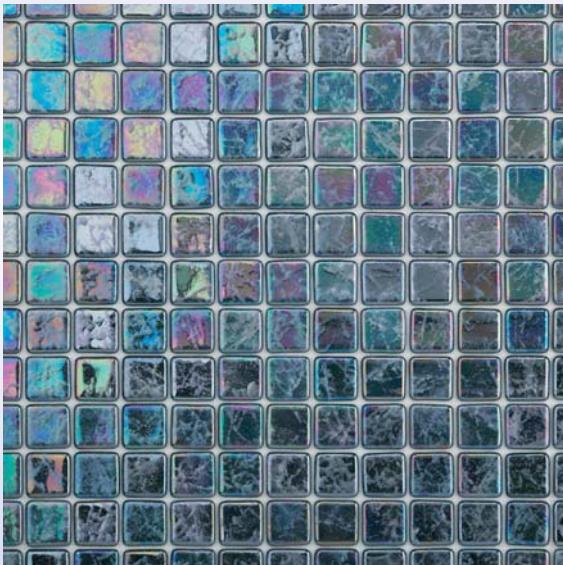
mass  
ction



# abalon



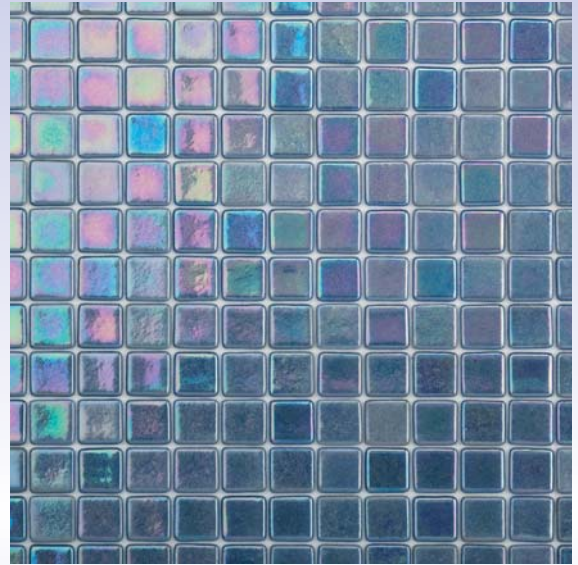
AB-33



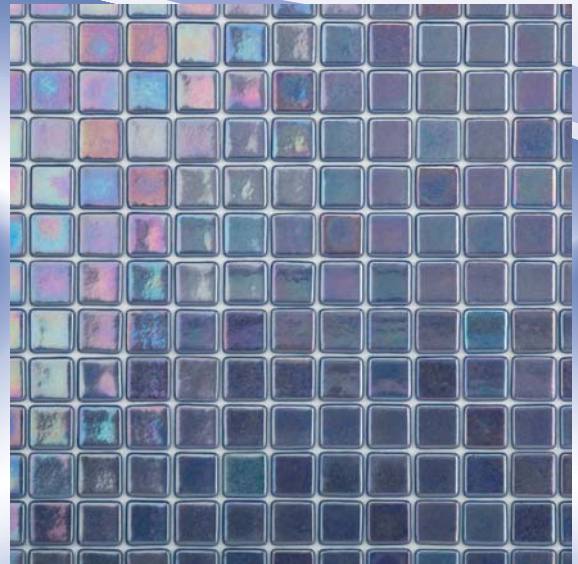
AB-35



AB-37



AB-34



AB-36



# Piscinas y Decoraciones Lucena S.L.

Piscinas y Decoraciones Lucena S.L.  
Polígono Industrial Urtinsa  
C/ Artesanos, 7  
C.P. 28923  
Alcorcón - Madrid  
Telf.: 91 619 43 18 // 91 643 17 40  
Fax: 91 619 43 18  
E-mail: [lucena@nauta.es](mailto:lucena@nauta.es)